



Extend Your Outdoor Living

Scenix™ porch windows with retractable screens offer a whole new perspective on outdoor living. Ideal for any kind of enclosed porch project, the patented dual-sash design with Screen Away® offers a new and innovative way to enjoy the views and capture the fresh air without worrying about mosquitos, wind or rain. Be among the first to offer Scenix — yet another innovation from LARSON®.





Porch Windows with Retractable Screens



Imagine the possibilities

Now there's a new way to enjoy the outdoors from sunrise to sunset without worrying about mosquitos! Nature takes center stage with extra-large, custom-sized porch windows that easily slide open, revealing dual top and bottom retractable screens.

Stretch out the seasons



- A unique and affordable way for homeowners to extend their outdoor space with protection from bugs and outside elements.
- Tempered glass is 4X stronger than regular glass. Additional glass upgrades are available for protection against solar heat and UV rays.
- **Retractable screens with Screen Away®**
Provide top and bottom ventilation and protection from outside elements; available with standard fiberglass screen or upgrade to the 4-in-1 screen for superior strength, better insect protection, enhanced solar protection and improved privacy.
- Easy to install with a handful of screws and minimal supplies.

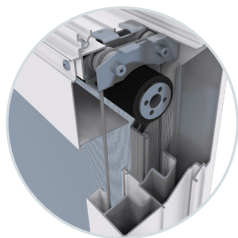
Sizes and colors to fit your porch project

Standard sizes (white only)

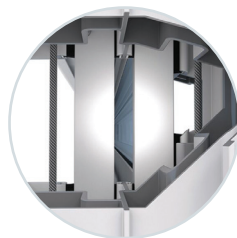
- 44-1/2" x 72" 44-1/2" x 84"
- 56-1/2" x 72" 56-1/2" x 84"
- 68-1/2" x 72" 68-1/2" x 84"

Custom size range (rough opening)

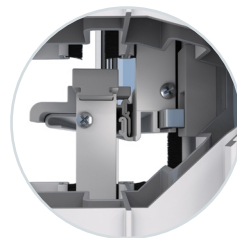
- Widths from 24" to 72"
- Heights from 30" to 96"



Quad pulley balance system for smooth and reliable operation



Stainless steel aircraft cable supports the counterbalanced sashes for easy ventilation



Dual sashes with weatherstripping and interlocking rail create a tight seal



Sash lock and 3/16" tempered glass for added protection

888-483-3768 | larsondoors.com



Scenix™ product is uniquely designed for areas that function as an extension of the outdoors. Although designed to deter moisture, Scenix™ porch windows with retractable screens are ideal for homeowners who wish to embrace the outdoors and some weather-related elements. Scenix™ is appropriate only for non-heated, non-air conditioned spaces. Scenix™ porch windows are classified for use in AAMA/NPEA/NSA 2100-12 Category II sunrooms. Refer to your local building codes for window requirements specific to your location.

©2017 Larson Manufacturing Company 0952691